

亡き王女の為のセプテット

「東方紅魔郷 ～the Embodiment of Scarlet Devil.」より レミリア・スカーレットのテーマ

ZUN

Moderately ♩ = 132

(♩=♩)

イントロ

1

6

10

メロA

17

23

27

32

メロB

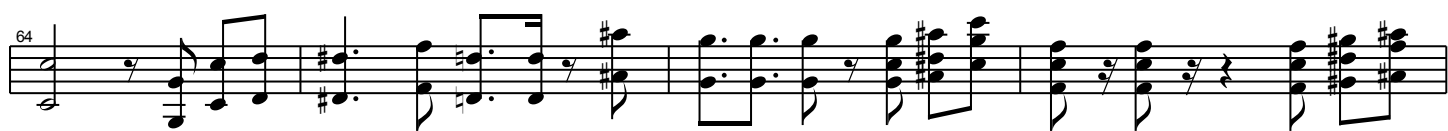
36



サビ



メロA



メロB

Musical notation for Melody B, measures 77-88. The notation is written on a single staff with a key signature of one sharp (F#). It features a series of eighth and sixteenth notes, often beamed together, with some measures containing triplets. The melody is characterized by its rhythmic complexity and the use of accidentals.

サビ

Musical notation for the Chorus (サビ), measures 89-98. This section is written on a single staff and includes a key signature change to two sharps (F# and C#). It features a mix of eighth and sixteenth notes, with some measures containing triplets. The notation is dense and rhythmic, typical of a chorus in a pop or rock song.

アウトロー

($\frac{3}{4}$ = $\frac{3}{4}$)

Musical notation for the Outro (アウトロー), measures 100-108. This section is written on a single staff and features a key signature of two sharps (F# and C#). It includes a variety of rhythmic patterns, including eighth and sixteenth notes, and some measures contain triplets. The notation is complex and rhythmic, typical of an outro in a pop or rock song.

